

NCI Southwest

The Nanotechnology Collaborative Infrastructure Southwest

*building a southwest regional
infrastructure for nanotechnology
discovery, education and innovation.*



Research Centers

Take advantage of our cutting edge facilities and resources. To find out more, click on one of the nanotechnology centers below.



LeRoy Eyring Center for Solid State Science

Open access to advanced facilities and equipment

[PROFILE](#)

ASU NanoFab

A flexible nano-processing facility

[PROFILE](#)

The Center for Nanotechnology in Society

Studies the societal impacts of nanotechnology

[PROFILE](#)

Solar Power Lab

Staging ground for sustainable energy technology

[PROFILE](#)

Center for the Life Cycle of Nanomaterials

Interdisciplinary team studying the trade-offs between the intended use of engineered nanomaterials and the potential risks

[PROFILE](#)

Peptide Array Core

Offering peptide microarrays and processing

[PROFILE](#)



Funded, in part, by a grant from the
National Science Foundation. DUE 1542160

The NCI Southwest is a
regional center in the NNCI



Education

Education and community outreach is at the heart of our mission. Find out more about our research experiences, webinars, outreach, and remote access opportunities below.



More REU Action: Building components for a bio-sensor (left), and inspecting silicon wafers in a cleanroom (right).

Research Experiences

We are pleased to fund summer research programs for teachers and undergraduates. Information and applications for the 2017 program for undergraduates are now available.

[Information for 2017 REU](#)

Use the link below to learn about the 2016 programs.

[View 2016 Highlights](#)

Remote Access

We are pleased to partner with the national [RAIN Network](#) to offer free remote access to nanotechnology instruments from the [ASU NanoFab](#).

Bring the technology from our lab into your classroom. You can remotely control a scanning electron microscope to look inside the nano world!

[More Information](#)

[Request a Remote Access Session](#)

Webinar Series

Our 2016 nanotechnology webinar series is underway.

[View Webinars](#)

Outreach

We conduct outreach programs with K-12 schools and the general public year-round.

[View Activities](#)

NCI-SW Events Calendar

- Remote access electron microscope used in K-12 classrooms across the state and for public events.
- Partnering with Rio Salado College at ASU's "Night of the Open Door" and Tempe's "Geeks Night Out".
- Lab tours of ASU centers for > 700 grade school and community college students.

- REU and RET participants from Scottsdale CC and Navajo Technical University.
- NTU students presented at the Workshop on Crystalline Silicon Solar Cells, Vail, CO, Aug. 2016.

- Cleanroom "Virtual Field Trip" – panoramic tour as a platform for on-line teaching materials.

<http://vft.asu.edu/vftvr/nanofab/>

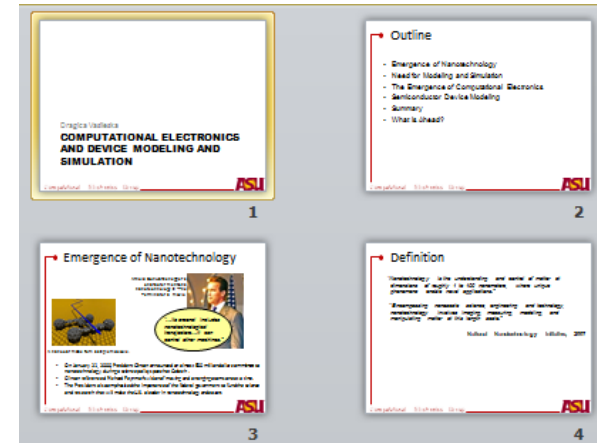
<http://vft.asu.edu/VFTNanofab/panos/nanofab/cleanroom.html>



- Hosting external users to better understand tools for developing future scenarios.
- “Science Outside the Lab” workshop in Washington, DC.



- Dragica Vasileska coordinates the NCI-SW computational nanoelectronics activity.
- She is converting her ASU “Semiconductor Device & Process Simulation” class into a nanoHUB course.
- 20-30 thirty minute lectures that use device modeling scripts running Padre, the nanoHUB drift-diffusion simulator.



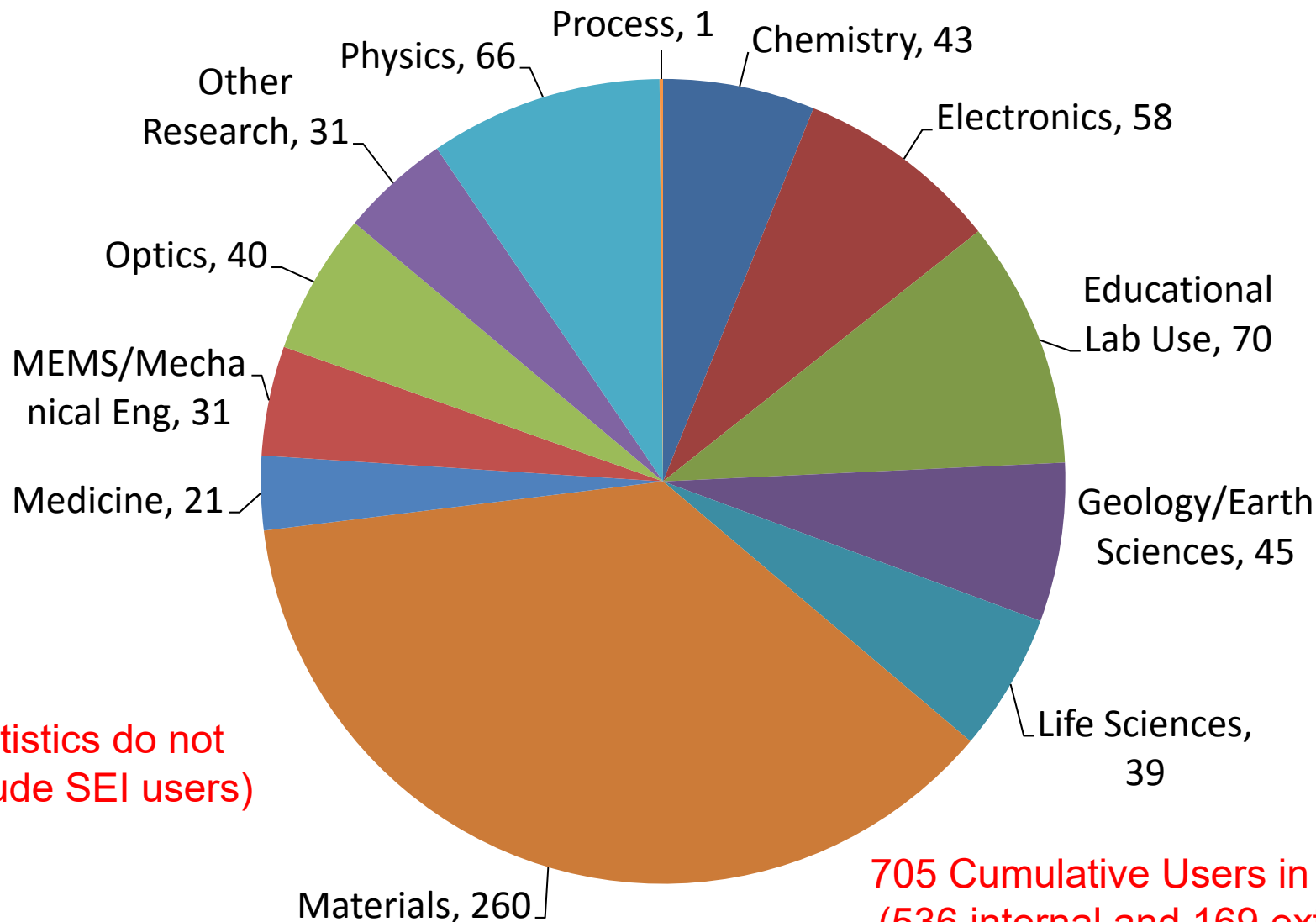
<https://nanohub.org/members/9736/usage>

Network Activities

- Science Outside the Lab
- Workforce development sub-committee
Thornton (ASU), Gamble (UW), Healy (GA Tech),
McNamara (Louisville), Sellmyer (Nebraska), Wilson (Harvard)

Kick-off meeting held 7 Nov 2016. Addressed several questions related to leveraging NNCI capabilities for community colleges and local industries. Several action items....

User Statistics



- Recruit Science Outside the lab participants from across the NNCI
- Complete the first stage of the Virtual Field Trip on-line classroom
- Continue building links to non-traditional users in the geological and health-care communities
- Develop entrepreneurship 'boot-camp' program